

PLAN VIEW

MFG RATING NAMEPLATE

JAGG ELECTRICAL & CONTROL NIAGARA FALLS, NEW YORK METAL ENCLOSED INDOOR SWITCHGEAR ASSEMBLY 5.5KV, 200 AMP, 60KV BIL DESIGNED FOR USE ON A CIRCUIT CAPABLE OF DELIVERING NOT MORE THAN 25,000 RMS SYMMETRICAL AMPS	
AIR INTERRUPTER SWITCH (MFG-ABB)	VERSARUPTER
CONTINUOUS CURRENT, AMPERES	200
INTERRUPTING CURRENT, AMPERES	200
MAXIMUM VOLTAGE, KV	5.5
MOMENTARY CURRENT, KA RMS ASYM	40
FAULT CLOSING CURRENT, KA RMS ASYM	40
2 SEC. SHORT-TIME CURRENT, KA RMS SYM	25
FUSE HOLDER, (MFG - FERRAZ / MERSEN)	C5-3
MAXIMUM VOLTAGE, KV	5.5
CONTINUOUS CURRENT, AMPERES MAX.	200
INTERRUPTING CURRENT, KA SYM	63
FREQUENCY, HZ	60
BASIC IMPULSE LEVEL, KV BIL	60
MANUFACTURE DATE (MONTH/YEAR)	*/*
SERIAL NUMBER	****
TEXTURED BLUE PLASTIC w/.125\"/>	

WARNING NAMEPLATES

#	QTY	DESCRIPTION
A	1	WARNING SWITCH / FUSE MAY BE ENERGIZED WITH SWITCH IN ANY POSITION
TEXTURED RED PLASTIC w/.25\"/>		

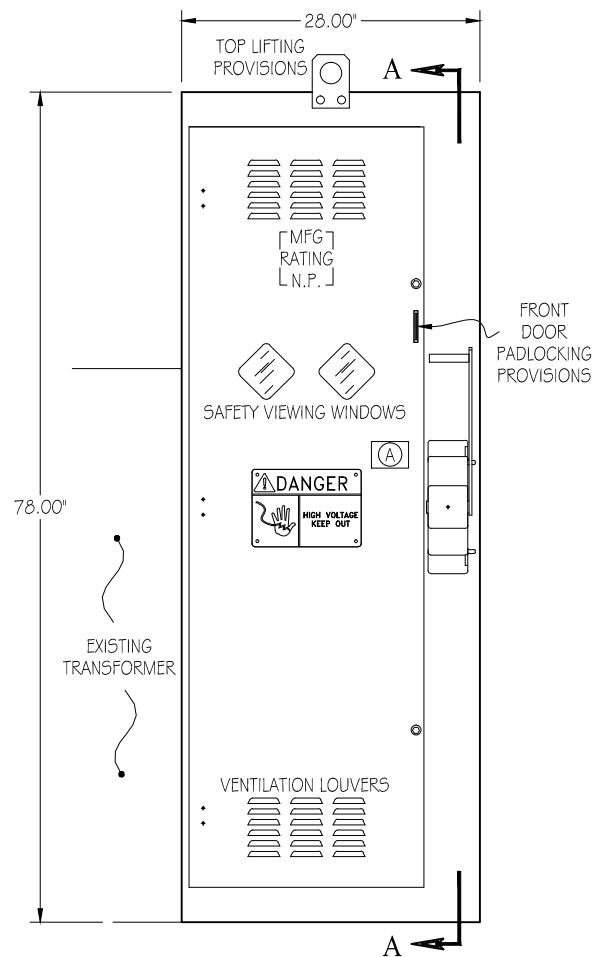
BILL OF MATERIAL

- BILL OF MATERIAL ITEMS SHOWN WITH A ◊ -

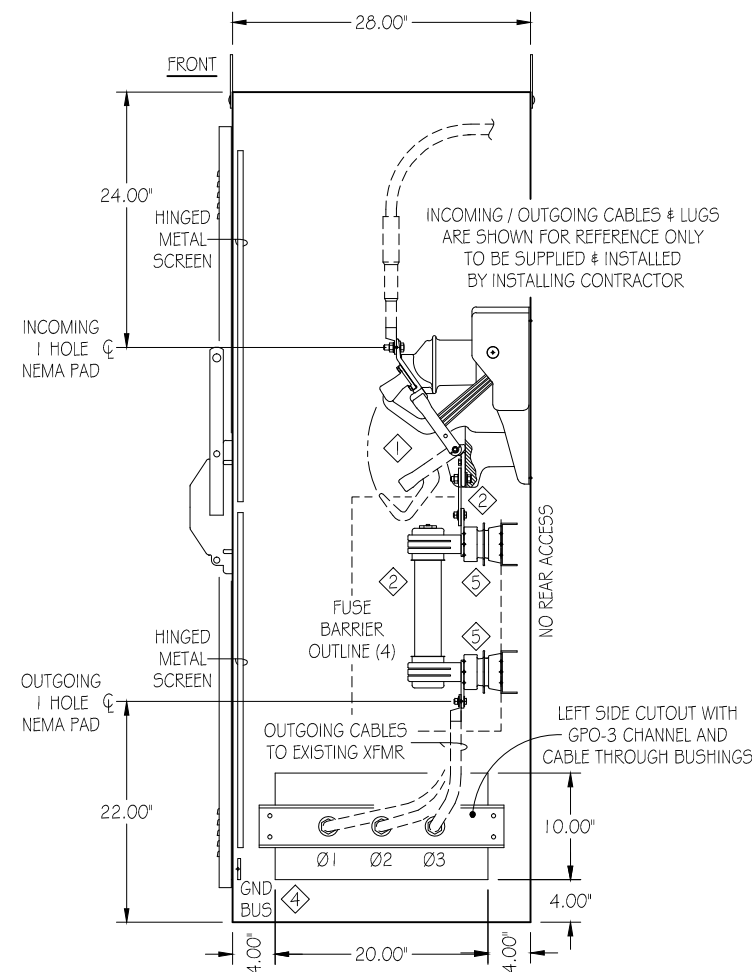
ITEM	QTY	DESCRIPTION	CATALOG #	MFG
1	1	LOAD INTERRUPTER SWITCH (VERSA-RUPTER) 5.5KV, 200 AMP, 60KV BIL, 40KA MOM	244-040-502	ABB
2	1	CURRENT LIMITING FUSE, TYPE C5-3, 5.5KV MAX.		
		3 - SETS LIVE PARTS (ON A-20/60KV BIL INS.)	228-700-530	MERSEN / FERRAZ
		3 - FUSE, 5.5KV, 65E (3 ACTIVE / 0 SPARE)	A055FI DORO-65E	MERSEN / FERRAZ
3		.25"x 2", SILVER PLATED, COPPER BUS (FULL ROUND EDGE)	-----	-----
4		25"x 2", SILVER PLATED, COPPER GROUND BUS (FULL ROUND EDGE)	-----	-----
5	6	INSULATOR, A-20 CLASS, 60KV BIL, EPOXY	02-000-020	E.P.C.
6	3	CABLE THROUGH BUSHING (PLEASE ADVISE CABLE O.D.)	-----	-----

NOTES

RATINGS
5KV, 200 AMP, 60KV BIL
INDOOR RATED
ANSI C37.20.3
ANSI/IEEE CATEGORY B (NOT SUBJECT TO ACCESS BY THE GENERAL PUBLIC)
WIRING PER APPLICABLE N.E.C. AND ANSI STANDARDS
CONSTRUCTION
GALVANNEAL SUBSTRATE FOR EXTREME RUST RESISTANCE
ANSI 61 (GRAY) - HEAT CURED POWDER COATED
3.5" MINIMUM PHASE TO PHASE (60KV BIL)
3.5" MINIMUM PHASE TO GROUND (60KV BIL)
EQUIPMENT CHARACTERISTICS
FRONT SWITCH OPERATING HANDLE w/PROVISIONS TO PADLOCK SWITCH IN EITHER THE OPEN OR CLOSED POSITION
MECHANICAL INTERLOCK (FRONT DOOR HELD CLOSED WHEN SWITCH IS CLOSED & SWITCH CAN NOT BE CLOSED WHILE FRONT DOOR IS OPEN)
PADLOCKABLE HINGED DOOR w/ INTERIOR HINGED SCREENS
TOP LIFTING PROVISIONS
FULL ROUND EDGE SILVER PLATED COPPER PHASE BUS
FULL ROUND EDGE SILVER PLATED COPPER GROUND BUS (w/NEMA 2 HOLE DRILLINGS)
FULLY SKIRTED CLASS A-20 / 60KV BIL INSULATORS
SAFETY VIEWING WINDOWS
ASPECTS
APPROXIMATE SHIPPING WEIGHT 700 LBS (1 SHIPPING SECTION)
JAGG ELECTRICAL & CONTROL IS RESPONSIBLE FOR THE EQUIPMENT SHOWN ON THIS DRAWING ONLY. ALL OTHER EQUIPMENT AND INSTALLATION IS BY OTHERS.



FRONT VIEW



SECTION A-A

NO.	DATE	REVISION	BY:

PROPRIETARY NOTE:
THIS DRAWING CONTAINS PROPRIETARY INFORMATION OF JAGG ELECTRICAL & CONTROL. THIS PROPRIETARY INFORMATION MAY NOT BE USED, REPRODUCED, OR DISCLOSED TO ANY OTHER PARTIES FOR ANY OTHER PURPOSE WITHOUT THE EXPRESSED WRITTEN PERMISSION OF JAGG ELECTRICAL & CONTROL.

CUSTOMER:

P.O.#: ***
PROJECT:
SAMPLE

METAL ENCLOSED SWITCHGEAR ASSEMBLY
5KV, 200 AMP, 60KV BIL
-INDOOR-



4870 PACKARD ROAD, NIAGARA FALLS, NY, 14304
◆ PHONE: (716) 278-1440 ◆ WEB: JAGGEC.COM ◆

CHECKED BY: GMG
DRAWN BY: J. AGNELLO
DATE: 4/26/11 SHEET: 1

DRAWING #: SAMPLE